

Submersible Agitator Pumps

US-A Series

#Agitator / #LightWeight



US-40J-A



US-233B-A

- US-A series pumps are equipped with an agitator as the standard.
- Sands in water is efficiently transferred as the agitator stirs it.

◆ Applications

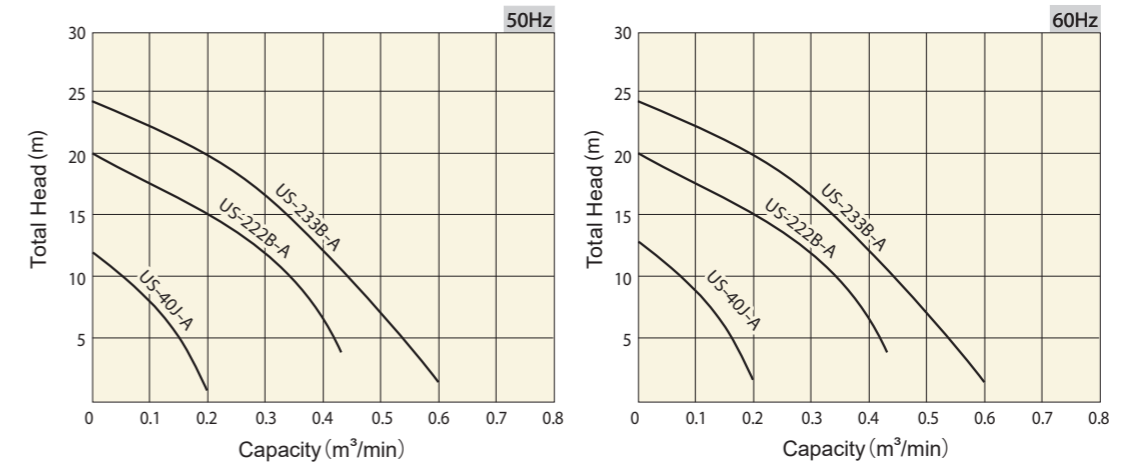
- Dewatering on construction sites
- Dewatering of muddy water

◆ Main Specifications

| Discharge Diameter(mm) | 50   | 50              | 80        |
|------------------------|--|-----------------|-----------|
| Pump Models            | US-40J-A                                     | US-222B-A       | US-233B-A |
| Motor Output (kW)      | 0.4  | 1.5             | 2.2       |
| Medium                 | Type Rain Water / Spring Water / Muddy Water |                 |           |
|                        | Temperature Max 40 Degrees Celsius           |                 |           |
| Pump                   | Shaft Seal Double Type Mechanical Seal       |                 |           |
|                        | Shaft Bearing Sealed Ball Bearing            |                 |           |
|                        | Impeller *FCD                                |                 |           |
|                        | Casing *SS400 + Synthetic Rubber             |                 |           |
| Motor                  | Type/Pole Dry Type Induction Motor / 2pole   |                 |           |
|                        | Phase  | Single          | Three     |
|                        | Insulation Class                             | E               | F         |
|                        | Protector                                    | Auto-Cut        |           |
|                        | Frame  | *ADC            |           |
|                        | Shaft  | Stainless Steel |           |
|                        | Discharge Type                               | Hose Coupling   |           |

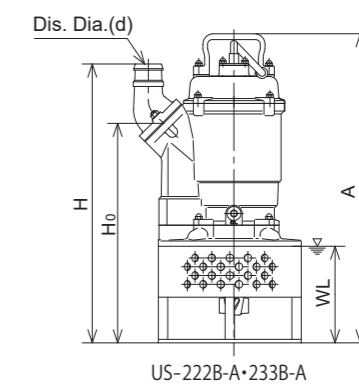
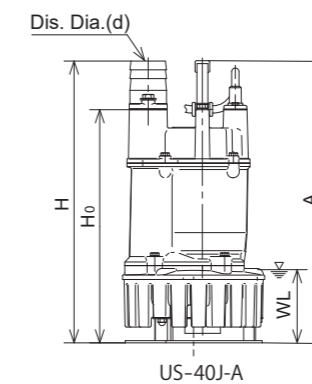
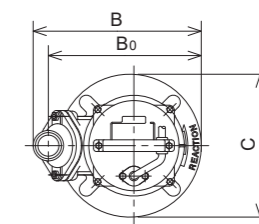
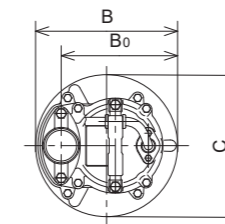
\*FCD : Ductile Cast Iron / SS400 : Mild Steel / ADC : Die Casting Aluminum Alloy

◆ Performance Curve



◆ Specifications

| Discharge Diameter (mm) | Pump Models | Motor Output (kW) | Phase  | Total Head (m) | Capacity (m³/min) | Starting  | Max Solid Through (mm) | Weight (kg) *Without Cable | Cable Length (m) |
|-------------------------|-------------|-------------------|--------|----------------|-------------------|-----------|------------------------|----------------------------|------------------|
| 50                      | US-40J-A    | 0.4               | Single | 8              | 0.1               | Capacitor | 7                      | 12.5                       | 5                |
| 50                      | US-222B-A   | 1.5               | Three  | 13             | 0.2               | DOL       | 13                     | 26                         | 10               |
| 80                      | US-233B-A   | 2.2               | Three  | 10             | 0.4               | DOL       | 13                     | 28                         | 10               |



◆ External Diagrams (mm)

| Pump Model | d  | H   | H <sub>0</sub> | A   | B   | B <sub>0</sub> | C   | WL  |
|------------|----|-----|----------------|-----|-----|----------------|-----|-----|
| US-40J-A   | 50 | 386 | 319            | 386 | 194 | 159            | 194 | 100 |
| US-222B-A  | 50 | 476 | 375            | 528 | 287 | 261            | 244 | 165 |
| US-233B-A  | 80 | 496 | 375            | 528 | 300 | 261            | 244 | 165 |

WL : Pump Starting Level